



TWELFTH SUNDAY AFTER PENTECOST
AUGUST 20, 2023

HYMN – 914 “Christ Is Our Cornerstone”

We follow Setting Two on page 172.

CONFESSION

LORD, HAVE MERCY

GLORY TO GOD IN THE HIGHEST

The Word

PRAYER OF THE DAY

Gracious God, in Christ you bring people from near and far into the fellowship of your church. Open our eyes to your saving plan, and move us to embrace all who seek your salvation so that we may rejoice together at the banquet of your love; through your Son, Jesus Christ our Lord, who lives and reigns with you and the Holy Spirit, one God, now and forever.

FIRST READING – Isaiah 56:1,6-8

This is what the LORD says: “Maintain justice and do what is right, for my salvation is close at hand and my righteousness will soon be revealed.

⁶ And foreigners who bind themselves to the LORD to minister to him, to love the name of the LORD, and to be his servants, all who keep the Sabbath without desecrating it and who hold fast to my covenant—⁷ these I will bring to my holy mountain and give them joy in my house of prayer. Their burnt offerings and sacrifices will be accepted on my altar; for my house will be called a house of prayer for all nations.”⁸ The Sovereign LORD declares—he who gathers the exiles of Israel: “I will gather still others to them besides those already gathered.”

PSALM 67

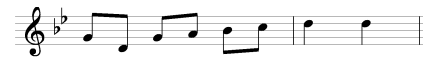
SECOND READING – Ephesians 2:13-22

¹³ But now in Christ Jesus you who once were far away have been brought near by the blood of Christ.

¹⁴ For he himself is our peace, who has made the two groups one and has destroyed the barrier, the dividing wall of hostility, ¹⁵ by setting aside in his flesh the law with its commands and regulations. His purpose was to create in himself one new humanity out of the two, thus making peace, ¹⁶ and in one body to reconcile both of them to God through the cross, by which he put to death their hostility. ¹⁷ He came and preached peace to you who were far away and peace to those who were near. ¹⁸ For through him we both have access to the Father by one Spirit.

¹⁹ Consequently, you are no longer foreigners and strangers, but fellow citizens with God’s people and also members of his household, ²⁰ built on the foundation of the apostles and prophets, with Christ Jesus himself as the chief cornerstone. ²¹ In him the whole building is joined together and rises to become a holy temple in the Lord. ²² And in him you too are being built together to become a dwelling in which God lives by his Spirit.

GOSPEL ACCLAMATION page 179



Refrain



Al - le - lu - ia, al - le - lu - ia, al - le - lu - ia, al - le - lu - ia.

All: But now in Christ Jesus you who once were / far away
have been brought near by the / blood of Christ.

Refrain

GOSPEL – Matthew 15:21-28

²¹ Leaving that place, Jesus withdrew to the region of Tyre and Sidon. ²² A Canaanite woman from that vicinity came to him, crying out, “Lord, Son of David, have mercy on me! My daughter is demon-possessed and suffering terribly.”

²³ Jesus did not answer a word. So his disciples came to him and urged him, “Send her away, for she keeps crying out after us.” ²⁴ He answered, “I was sent only to the lost sheep of Israel.”

²⁵ The woman came and knelt before him. “Lord, help me!” she said. ²⁶ He replied, “It is not right to take the children’s bread and toss it to the dogs.”
²⁷ “Yes it is, Lord,” she said. “Even the dogs eat the crumbs that fall from their master’s table.” ²⁸ Then Jesus said to her, “Woman, you have great faith! Your request is granted.” And her daughter was healed at that moment.

CHILDREN’S SERMON

HYMN – 855 “The Church’s One Foundation”

SERMON – Ephesians 2:13-22

“Mercy For Outsiders”

NICENE CREED

PRAYER OF THE CHURCH

OFFERING

THE SACRAMENT - *We invite those who hold membership in this church or any church in fellowship with WELS, to partake of the true body and blood of Jesus Christ.*

DISTRIBUTION HYMNS

767 “Lord of Glory, You Have Bought Us”
673 “O Lord, We Praise You”

BLESSING

HYMN - 860 “In Christ There Is No East or West”

✠ ✠ ✠



No Choir for the month of August
Starting up in September!

~~Calendar of Events & Announcements~~

(Page 1 –August 20, 2023)

Serving today at Immanuel:

Organist: Jane Vacek **Elder:** Jason Horrmann
Video Taping: Mark DeVries **Power Point:** Lily DeVries
Altar Guild: Wendy Hellwig
Ushers: Andy Weber, Jon Hoff, Justin Black, Bruce Trick, Don Dettman, Dylan Weber, Travis Gauer, Nolan Hoff

Contacts

Pastor Eugene DeVries Pastor’s cell: 320-405-6490
NEW: pastor@eugenedevries.com
 Website: www.immanuelhutch.com
Monthly Calendar (under Church/calendar)
Weekly Bulletins (under Church/service)
 Church Services Broadcasted Mondays at 10:00 am & Sundays at 9 pm on Nuvera channel 10 or Mediacom channel 107.3



<https://www.facebook.com/immanuelhutch>
 Services are streamed live on Sundays at 10 a.m.



Teacher, Joel Holz - School office: 320-587-4858
 immanuellutherschool@hotmail.com

website: www.hutchinsonlutherschool.com



<https://www.facebook.com/immanuellutherschoolhutchinson>

Living in God’s Grace this Week

Today, Sunday:	10:00	a.m.	Worship Service w/Communion
Monday:	10:00	a.m.	Bible Study
	7:00	p.m.	Worship Service w/Communion
Sunday:	10:00	a.m.	Worship Service
	4:30	p.m.	Back to School Night

~~Calendar of Events & Announcements~~

(Page 2 –August 20, 2023)

Heating Season is upon us, if you are able to assist with additional giving to help defray the costs, it would be greatly appreciate.

Thank you.



The School qualified to receive financing through LACE (Lutheran Association for Church Extension).

What is not covered through fundraising will be financed through this organization. The proposed school budget covers all loan payments without requiring extra financial commitments from our congregations.

- The loan rate is 4.75% (15 year fixed/5 year balloon for 30 year mortgage)
- No added LACE mortgage fees.

LACE provides an opportunity for WELS members to purchase investments and receive interest payments. These investments help lower the interest rate on the building's loan payments through LACE.

- Annual returns – up to 3.5% for 5 years
- Start with as little as \$25

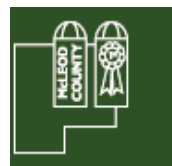
They are currently offering a 2 YEAR SPECIAL* 5.30%

Visit laceinc.org to learn more and/or to obtain the application.

Designate Immanuel Lutheran School to help reduce the cost of the loan for the school. Only WELS or ELS members are eligible to participate.

~~Calendar of Events & Announcements~~

(Page 3 –August 20, 2023)



Thank you for your help at the Fair!



There are collection boxes in the church entryway if you would to donate any of the following items for the workers.

- Snacks --- Nuts
- Chips --- Crackers
- Granola bars --- Breakfast items
- Gatorade--- Water bottles

Also, if you would like to serve lunch (and dessert) for approximately 12-15 people, please sign up using the following link.

AUGUST SCHEDULE: is filled

Watch for the September schedule

Plates, napkins, silverware and drinks are all provide. All you would have to do is bring by 11:45 a.m. to the Teacherage. We do have volunteers to serve and clean up, but if you'd like to help on the day you sign up for, that would be great as well.

If any questions, please contact Brittany Clark or Julie Thompson. *Thank you.*

*Donate cash to purchase supplies contact
Brittany Clark at 587-4858*



WELS Builders for Christ are looking for area volunteers to work with them. No construction experience is necessary and there are many opportunities to serve. Contact Elwood Heldt at 507-327-3313 for more information.

**Thank
You**

Thank you to all of the Kingdom Workers for their time and talent assisting with building the school. We are truly blessed to have them with us.

**Back to School Night –
Sunday, August 27 - 4:30 p.m.**

First Day of School – Monday, August 28



PTF will be doing the Fall mums fundraiser again this year. The site will open on August 7 and orders will be accepted through August 28. Delivery is Friday September 15. If any questions, please contact Beth Podratz at epodratz@gmail.com

*To access the site and place an order for your fundraiser group: www.gertensfundraising.com
Enter the Store ID code of 591 into the text field and click 'Enter ID to Continue'. (Store ID code for IMMANUEL LUTHERAN SCHOOL PTF: 591)*

pampered|chef.

Fundraiser for the new school

*The fundraiser runs from
August 1st to August 28th*

Place your orders via either:

1. <https://www.pamperedchef.com/part-y/ischoolfundraiser>
2. <https://www.facebook.com/groups/ischoolfundraiser/>

Also, check out this page for information on products, recipes, and prizes!

3. Fill out the order form from a catalog located on the table in the church entry way and give to Julie Thompson with payment.



Fundraiser Party Sales:
between \$200 and \$649.99 - 20% donation to the school
\$650 or more - 30% donation to the school

If any questions, contact Julie Thompson (583-6007) or Joyce Leske (320-469-2223) our Pampered Chef Consultant.

Preschool, Kindergarten, 1st through 8th Grade

The school has a variety of fundraising options to help the school with various activities....won't you help?

SCRIP A current list of the gift cards available thru the school is posted on the bulletin board. You pay the face value of the card and the school receives the % listed. We also carry Cash Wise/Coborns (\$25, \$50, \$100) which does not show on this list. The money earned provides your children with their field trips throughout the year. Remember the cards are available all year long. Thank you for your support of our School and Pre School.
Karen Kohls

- **Caseys Rewards.** – Go to www.caseys.com
- **cocacola.com/give** – *for Coke products, enter the code*
- **Country Hearth – Loaves4Learning**
- **Ink Cartridges** – There is a collection box in the entryway.
- **School Store Fundraiser** - www.schoolstore.com
- **Cash Wise Rewards**– enroll at www.morerewards.com
- **BoxTops** – This is all digital. For us to get credit, you will need to download the Boxtops for Education App on your smart phone, search Immanuel Lutheran School, Hutchinson and scan your entire receipt.

A complete listing with details is on the table in the entry way by the school display. Thank you for your help.



BUILDING FAITH FOUNDATIONS - New School Building: Below is a link to our Thrivent page where you, family, alumni, and friends can donate to our building fund. Just click on the link, then push the Make Personal Donation button. We also have this information on our website (www.hutchinsonlutherschool.com) under Building Project with a Donation button that leads you to the same Thrivent page. For traditional check donations envelopes can be provided if you know someone that would rather go that route than online. **BUILDING PROJECT | Hutchinsonlutheran (hutchinsonlutherschool.com)**



Thrivent Choice Dollars®

Do you have Choice Dollars® available?
Have you directed them? You can direct to thousands of organizations enrolled in the program - *including Immanuel Lutheran Church and School!*

School Calendar

